

A Disciple's Prayer

Lord, you fill my life with good gifts. Give me the wisdom to recognize them, to appreciate them, and to be grateful.

Thank you Lord, for the gift of family and friends. Thank you Lord, for the gift of Church and Parish. Thank you, most of all, for the gift of your Son, and the gift of the Kingdom.

Help me Lord...

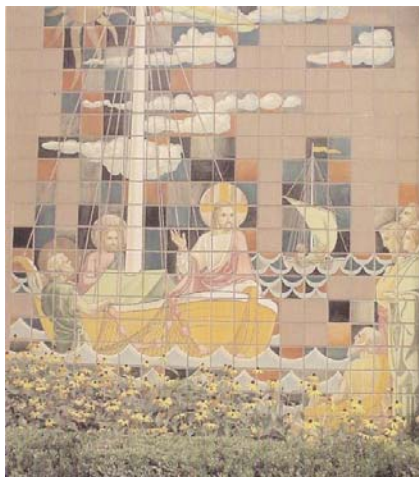
...to take time for prayer;

...to nurture the important relationships you have put in my life;

...to give back from the treasure you have given me—for the work of the Kingdom, and for the poor;

...to share myself in service to others—even as your Son came for the service of all.

Lord, help me each day to remember that all I have belongs to you. May I use these gifts wisely for the glory of your Kingdom. Amen.



The Call to Discipleship



*St. William Parish
531 Common St.
Walled Lake, MI 48390*

ST. WILLIAM PARISH
531 Common
Walled Lake, MI 48390

Telephone (248) 624-1421



Fax (248) 624-5273

Website: www.stwilliam.com

Dear Parishioners,

Over the last six months, I, with the Parish Pastoral Staff, and the Parish Council and Commissions, have been discerning the will of the Holy Spirit for our Parish. It has become abundantly clear to us that our Parish is now being led to an intensification of Parish Life—specifically, in how we show our grateful response to God through prayer, family, treasure, and service. To summarize, it is nothing less than a ***Call to Discipleship***.

Disciples pray. And they come together to worship. Disciples pay attention to their families and other important relationships. Disciples financially support the work of the Lord, according to their ability. Disciples serve the needs of others, as Christ came to serve.

In my homilies at Mass for the last two months I have been talking about various aspects of discipleship. At this point, we need to take time to focus on the particular area of financial support. All areas are important; we can't neglect this one and still say that we're responding wholeheartedly. And there are needs. The Parish cannot function without the financial support of the parishioners. Period.

As you pray about how to respond, discuss with God whether the support you give your Parish appropriately reflects your response to the ***Call to Discipleship***. Given the Parish's serious need, any increase you make will be very appreciated.

In Jesus,

Fr. Michael

Rev. Michael G. Savickas, Pastor

P.S.: While we need desperately to increase our offertory income, I am not asking any parishioners who are already giving at a level that, for them, is a faithful response, to feel guilty because they can't give more. RATHER, I am asking *all others* to look to such people as models, and that whatever donation increase they make will truly be, for them, a sacrifice.

THE CALL TO DISCIPLESHIP

An important practical goal of “*The Call to Discipleship*” is to challenge our parishioners to provide the financial resources that are necessary to fulfill our parish mission.

The St. William Stewardship Commission has the responsibility of reviewing our finances on a monthly basis. A budgetary committee carefully plans for anticipated income and expenses for the coming year. In order to balance the budget, we have been forced to cut service, programs and ministries. The success of this program will help us to reverse this trend.

PARTICIPATION IS THE KEY!

All St. William parishioners are asked to make an annual commitment to the offertory collection for the coming year. A weekly contribution is recommended, although some may prefer a monthly payment or have special considerations.

It is well understood that some families in our parish are already giving to the best of their ability. Their contributions reflect their serious commitment to discipleship. We invite all other parishioners to follow their lead. **TOGETHER**, we can accomplish the work that God gives us.

SUGGESTED

A series of **suggested** commitment plans are presented here to assist with the discernment of an annual commitment. While each of our financial situations are unique, one of these plans should be within the means of the majority of our members.

SUGGESTED WEEKLY COMMITMENT PLANS BASED ON INCOME		
ANNUAL INCOME	YEARLY PLEDGE	WEEKLY OFFERING
\$100,000	\$5,000	\$100
75,000	3,750	75
60,000	3,000	60
50,000	2,500	50
40,000	2,000	40
30,000	1,500	30
25,000	1,250	25
20,000	1,000	20
15,000	750	15
Other?	?	?

IS \$20 PER WEEK POSSIBLE?

To some \$20 may sound like a lot, but when you think about it, this is about what it takes to pay for a half of tank of gasoline in your automobile; two or three people to eat at a fast food restaurant; or two individuals to see a movie.

While not everyone has the financial ability to make this size commitment because of a fixed or limited income, many of our parish families do have this potential and possibly more.

GUIDELINES

We are all familiar with the responsibility of financing our own households. The same is true of our spiritual home. We simply ask that the amount committed is proportionate with the blessings that God has bestowed upon each of us.

A SUGGESTED NEW WEEKLY CONTRIBUTION BASED ON A PERCENTAGE INCREASE			
Current Contribution	20% Increase	30% Increase	40% Increase
\$5.00	\$6.00	\$6.50	\$7.00
10.00	12.00	13.00	14.00
15.00	18.00	19.50	21.00
20.00	24.00	26.00	28.00
25.00	30.00	32.50	35.00
30.00	36.00	39.00	42.00
35.00	42.00	45.50	49.00
40.00	48.00	52.00	56.00
50.00	60.00	65.00	70.00
75.00	90.00	97.50	105.00

PLEASE NOTE:

- Commitment cards can be returned in the offertory, to the Parish Office, or by mail.
- An annual commitment is an intention of good faith. Should circumstances arise that prevent your fulfilling this commitment, an adjustment can be made.
- Donations to the offertory can be made electronically via EFT (Electronic Funds Transfer from a bank account), or by credit or debit card. Automatic donations can be set up, adjusted, or cancelled at any time at our secure website, www.stwilliam.com.

OFFERTORY COLLECTION

&

THE PARISH BUDGET

OFFERTORY COLLECTION HISTORY

BUDGET YEAR	BUDGET AMOUNT*	ACTUAL AMOUNT*	SHORTFALL
2007-2008	\$1,128,000	\$1,114,582	(\$13,418)
2008-2009	\$1,137,000	\$1,032,915	(\$104,085)

OFFERTORY COLLECTION TARGET

BUDGET YEAR	BUDGET AMOUNT*	ACTUAL AMOUNT*	
2009-2010	\$1,085,000	T.B.D.	HELP KEEP US IN THE BLACK!

*Includes envelopes, loose collections, and electronic giving

RESPONDING TO THE CALL TO DISCIPLESHIP

Please complete a Commitment Card and bring it with you to Mass on Commitment Weekend:

**Saturday, November 21st &
Sunday, November 22nd**

**YOUR GENEROSITY TO
ST. WILLIAM PARISH
IS GREATLY APPRECIATED!**